

CE conomic series

COMPTECH Screw Air Compressor

COMPRESSOR TECHNOLOGY FROM TAIWAN



CE75 - CE420



CE30 - CE60



ISO9001, ISO14001, ISO18001 Certificate

COMPTECH AIR COMPRESSOR BRAND

COMPTECH is a first-class air compressor manufacturer all over the world, which has been committed to providing clients with more efficient, more energy-saving and more environment-friendly air compressor product, thereby assisting clients to realize higher enterprise benefits

COMPTECH is positioned to leading air power system energy saving server all over the world, contract energy management services are customized, which can lead dynamic change and create green power, thereby making its own contributions to the society.



FIRST-CLASS SCALE CREATES FLAGSHIP IN AIR COMPRESSOR FIELD

COMPTECH was founded in 1996, and **COMPTECH** product have obtained dozens of certification issued by many countries such as European CE, American ASME, American UL, American ETL, etc. after being developed for 20 years, In addition, **COMPTECH** also received 7 national invention patents and more than 100 utility models. 14 invention patents and 96 utility models have been declared and approved

MORE PERFECT QUALITY CONTROL

COMPTECH penetrates strict quality control throughout procurement of raw materials, spare part processing, machine assembly and performance testing, and more perfect quality control has been realized.

1. LEITZ three-coordinate measuring instrument
2. Japan MAZAK CNC machine tool
3. Refined processing by industrial robot
4. High precision machine tool processing
5. Production assembly line



Certificate
ISO9001:2015



Certificate
ISO14001:2015



Certificate
ISO18001:2007

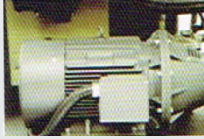


CE Certificate



CE Series

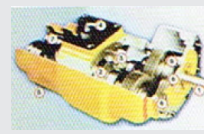
Excellent Electrical Motor



We provide high-efficiency motor, firm and durable, F-class insulation and IP 55 protection class.



Excellent Compressor Stage



We provide heavy-duty compressor stages equipped with SKF bearing, featuring high efficiency, low noise longer service life design 25.000 hrs.

Excellent Driven



We provide Direct-Driven with Coupling element rigid connection and automatic alignment between motor and screw (10 hp. - 400 hp.)

Microcomputer Controller



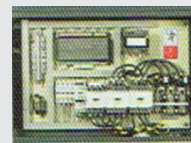
Comprehensive Display

- Separator change - overtime display
- Air filter change -overtime display
- Oil filter change - overtime display
- Compressor coolant change - overtime display
- Working hour display
- Load & Unload hour display
- Load & Unload status display
- Motor running status display
- The main motor current display
- Fan operation status display
- History fault 5 memories

Automatic Shutdown

- High Temperature shutdown
- High Pressure shutdown
- Phase revert shutdown
- Pressure sensor error shutdown
- Temperature sensor error shutdown
- Unbalance phase shutdown
- Main / Fan motor over current shutdown
- Starter fault shutdown

Excellent Electrical Controller



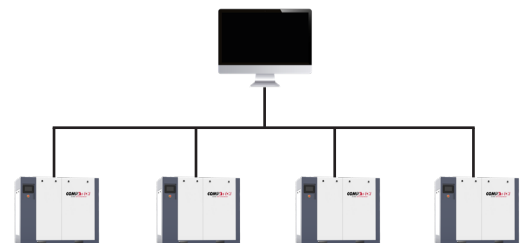
We provide TELEMECANIQUE from FRANCE reavy-duty, famous parts, feature safe and longer servicc lifte.

Excellent Cooling System



We provide over size of airoil cooler for not country (ambient temp:45 C) cooling fan is controlled by temperature can adjust matching for ambient temp.

Grouping Control



(Compressor different motor power but same air pressure)

Connected to network, we could remote software running as Scres platform to monitor and inspect compressors though internet at real time with youre permit. All could be realized extra investment.

Choose our All-in-One

Compressor - simplicity, efficiency and elegance in one package.



CA Series

Simple Installation

With the All-in-One Compressor,setting up an air system has never been easier. Simply connect an outlet pipe, and your comprehensive air system is ready. No more complex assembly, no more unnecessary hassle.

Space-Efficient Design

For small factory spaces, every square foot counts. This integrated structure uses less area than separated compressor, dryer, and tank setups, making it an ideal choice for businesses operating in tighter spaces.

TECHNOLOGY PARAMETER

CE Series Screw Air Compressor (8-13 bar)

Model	F.A.D	Pressure	Noise	Motor	Dimension(mm.)			Weight	Air Outlet	Motor
	m3/min	BAR	db(A)	kW/hp	L	W	H	(kg.)	inch	IP
CE-10	1.1 / 0.95 / 0.75	8 / 10 / 13	68±2	7.5 / 10	860	610	850	180	1/2	IP55
CE-15	1.85 / 1.5 / 1.05	8 / 10 / 13	68±2	11 / 15	1170	730	1000	260	3/4	IP55
CE-20	2.2 / 2.1 / 1.9	8 / 10 / 13	68±2	15 / 20	1170	730	1000	280	3/4	IP55
CE-30	3.6 / 3.2 / 2.7	8 / 10 / 13	70±2	22 / 30	1250	800	1120	400	1	IP55
CE-40	5.0 / 4.2 / 3.6	8 / 10 / 13	74±2	30 / 40	1450	1000	1300	520	1 1/2	IP55
CE-50	6.5 / 5.6 / 5.0	8 / 10 / 13	74±2	37 / 50	1450	1000	1300	670	1 1/2	IP55
CE-60	7.4 / 6.6 / 5.9	8 / 10 / 13	76±2	45 / 60	1450	1000	1300	740	1 1/2	IP55
CE-75	9.6 / 8.5 / 7.6	8 / 10 / 13	76±2	55 / 75	1780	1180	1500	1350	2	IP55
CE-100	12.6 / 11.2 / 10	8 / 10 / 13	80±2	75 / 100	1780	1180	1500	1500	2	IP55
CE-125	15.8 / 13.8 / 12.3	8 / 10 / 13	82±2	90 / 125	1885	1230	1565	1600	2	IP55
CE-150	20 / 17.4 / 14.8	8 / 10 / 13	85±2	110 / 150	2150	1410	1850	1750	2 1/2	IP55
CE-175	24 / 20 / 17.4	8 / 10 / 13	85±2	132 / 175	2150	1410	1850	1950	2 1/2	IP55
CE-200	27.2 / 24.2 / 21.1	8 / 10 / 13	88±2	160 / 200	2650	1670	1984	3400	3	IP55
CE-250	29.4 / 26.4 / 27.5	8 / 10 / 13	88±2	185 / 250	2650	1670	1984	3600	3	IP55
CE-300	38.1 / 30.0 / 28.5	8 / 10 / 13	88±2	220 / 300	3100	2100	2000	4000	3	IP55
CE-350	42 / 38.2 / 31.5	8 / 10 / 13	88±2	250 / 350	3100	2100	2000	4200	3	IP55
CE-420	48 / 43 / 41	8 / 10 / 13	88±2	315 / 420	3555	2000	2050	6000	3	IP55

CA Series All-in-One Screw Air Compressor (8-10 bar)

CA-H Series All-in-One Screw Air Compressor for Laser Cutting 15.8 bar (VSD)

Model	F.A.D	Pressure	Noise	Motor	Dimension(mm.)			Weight	Air Outlet	Motor	Tank
	m3/min	BAR	db(A)	kW/hp	L	W	H	(kg.)	inch	IP	L.
CA-10(H)	1.1 / 0.95 / 0.55	8 / 10 / 15.8	62±2	7.5 / 10	1810	800	1550	500	3/4	IP55	500
CA-15(H)	1.65 / 1.3 / 0.85	8 / 10 / 15.8	64±2	11 / 15	1810	800	1750	610	1	IP55	500
CA-20(H)	2.2 / 2.1 / 1.6	8 / 10 / 15.8	64±2	15 / 20	1810	800	1750	650	1	IP55	500
CA-30(H)	3.6 / 3.2 / 2.2	8 / 10 / 15.8	64±2	22 / 30	1850	860	1850	800	1 1/2	IP55	500