



**COMP3TECH**  
Screw Air Compressor

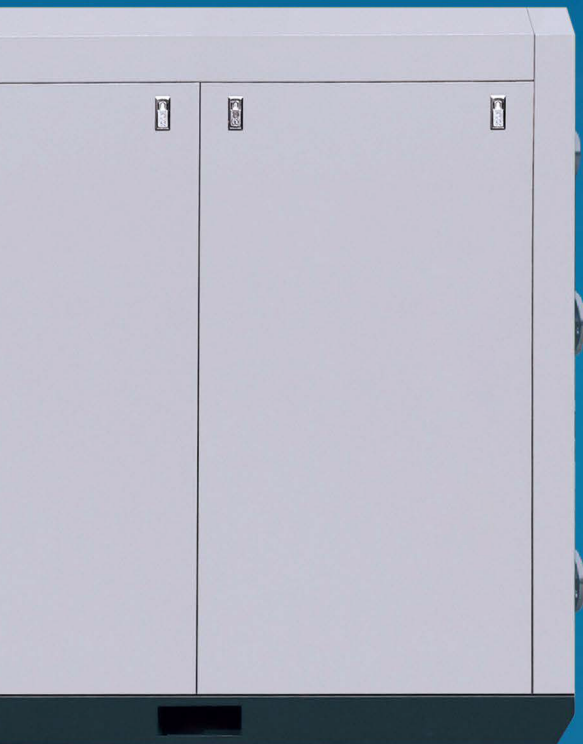
## Oil-free Water Lubricant Screw Compressor



# OIL-FREE SCREW COMPRESSOR WATER LUBRICATED SERIES



# Air compressor Vacuum pump





# COMP31411

Screw Air Compressor



**A** Water-Lubricated End Block



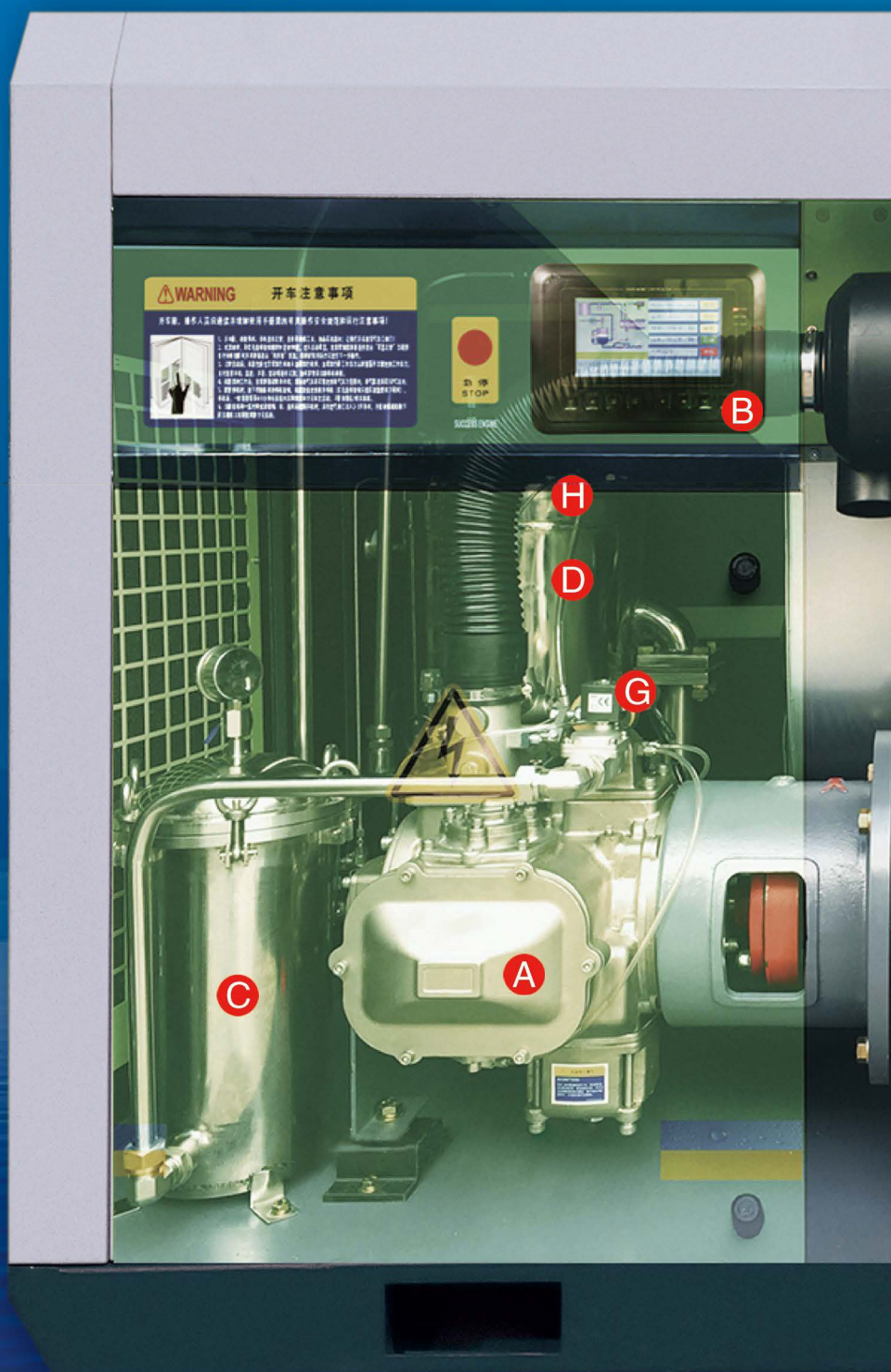
**B** Visual Touchable Control System



**C** Stainless Steel Filter

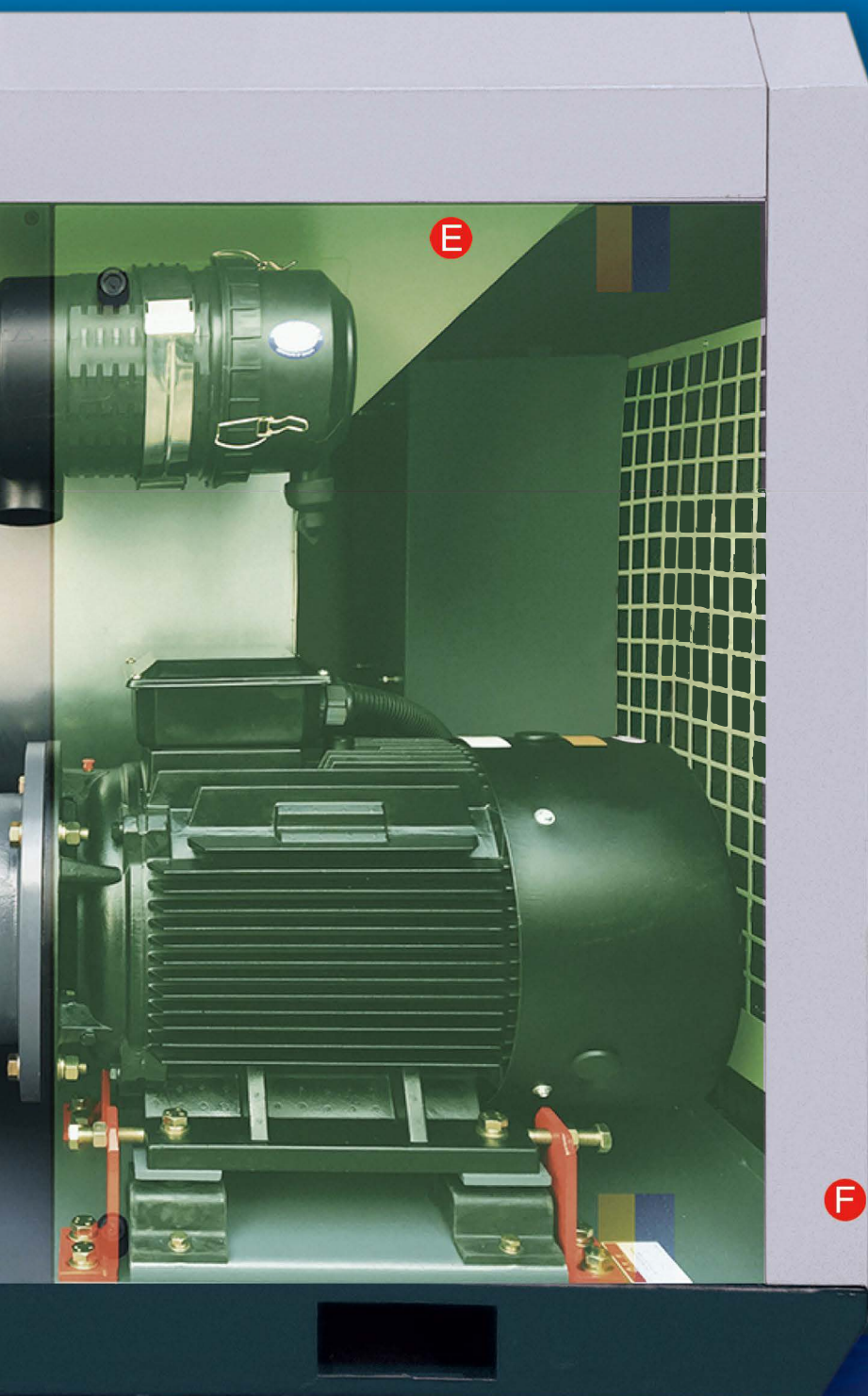


**D** Stainless Steel Separator



Isothermal compression





**E** Brass Tube for Cooling



**F** Auto Draining System



**G** Reliable Imported Solenoid Valve



**H** Stainless Steel Min-Pressure Valve

on low speed operation

## Air-cooled structure

---

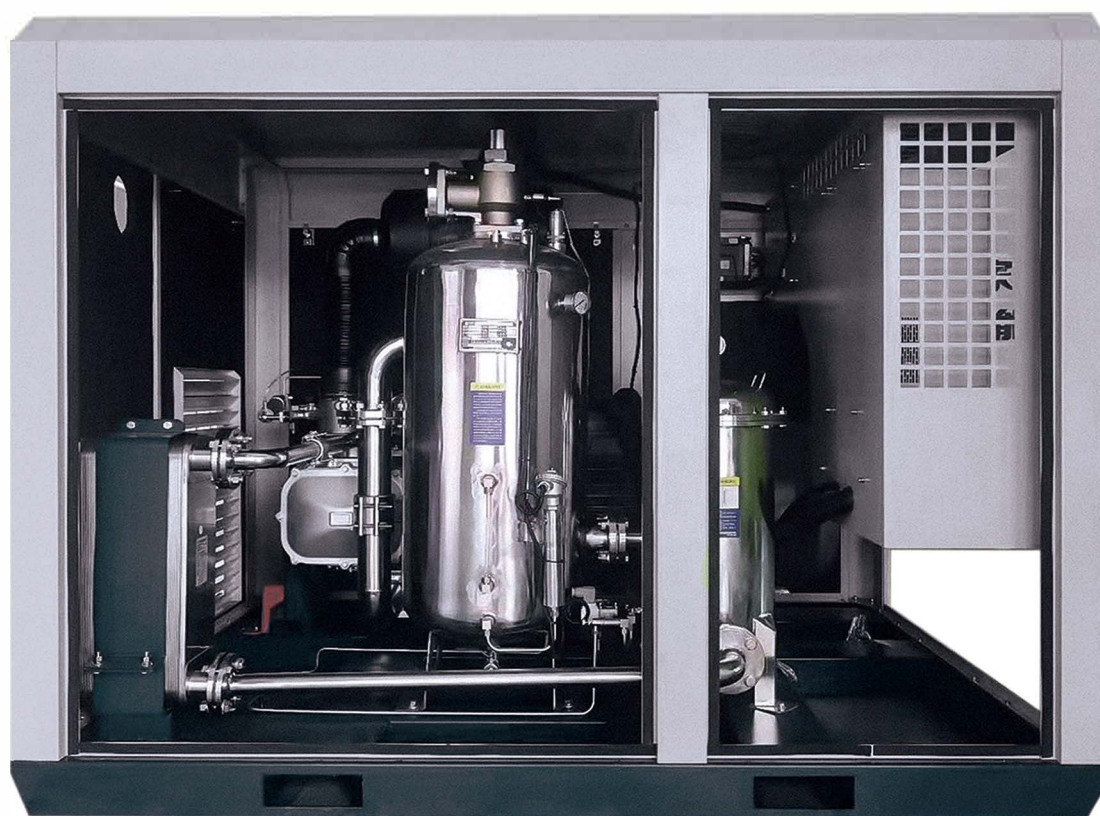
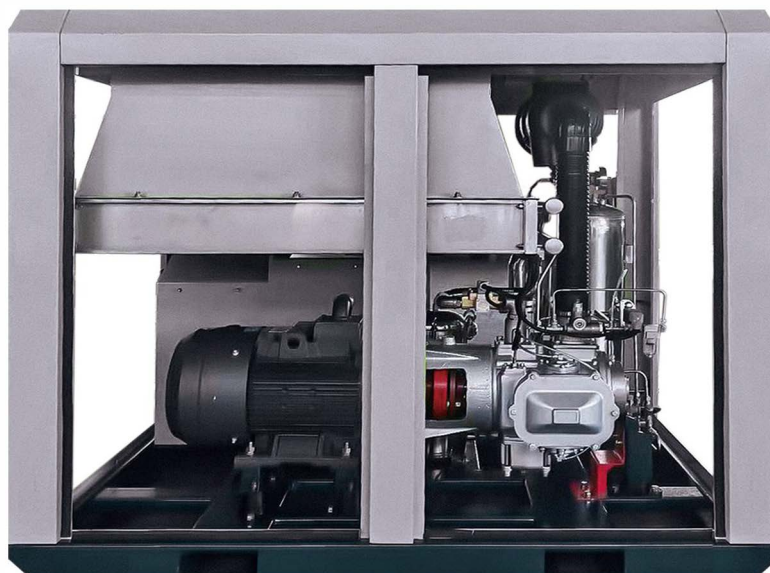


## Water cooled structure

---







---

# With core technology, practice to upgrade!

energy saving, high efficiency and low cost!





## The advantages of water lubricated compressor

Compared with traditional dry type two-stage compression, SHNH water lubricated single-stage compression has congenital superiority, as the two unique characteristics of low temperature compression and low rpm operation, its high volumetric efficiency and durability are the greatest return to users; The use of water lubrication will greatly reduce the user's operating costs and absolutely oil-free is the best guarantee of the quality of air supply!



Atmospheric air cooling series parameters

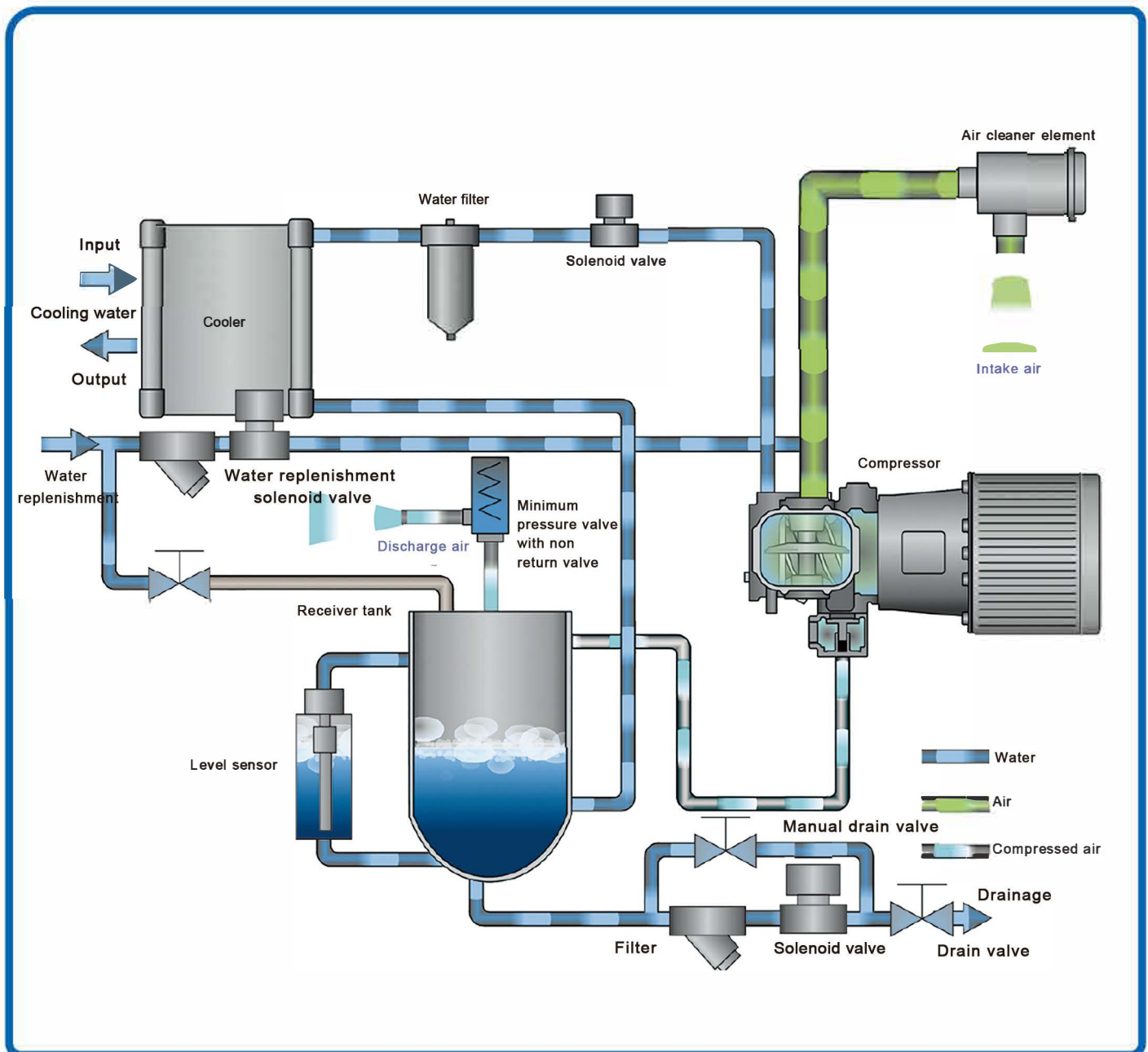
MODEL	MOTOR POWER	MAX PRESSURE	AIR FLOW	NOISE	WEIGHT	DIMENSION
Air Cooling Series	kW	bar	m3/min	db	kg	L x W x H
W7.5-8	7.5	8	1	60	400	1000X720X1050
W7.5-10	7.5	10	0.9	60	400	1000X720X1050
W11-8	11	8	1.6	63	460	1156X845X1250
W11-10	11	10	1.4	63	460	1156X845X1250
W15-8	15	8	2.50	65	620	1306X945X1260
W18-8	18	8	3	67	750	1520X1060X1390
W18-10	18	10	2.5	67	750	1520X1060X1390
W22-8	22	8	3.6	68	840	1520X1060X1390
W22-10	22	10	3.2	68	840	1520X1060X1390
W30-8	30	8	5	69	1050	1760X1160X1490
W30-10	30	10	4.5	69	1050	1760X1160X1490
W37-8	37	8	6.2	71	1100	1760X1160X1490
W37-10	37	10	5.8	71	1100	1760X1160X1490
W45-8	45	8	7.30	74	1200	1760X1160X1490
W55-8	55	8	10.0	74	1250	2350X1250X1880
W75-8	75	8	13.0	75	2500	2550X1620X1880
W90-8	90	8	15.0	76	2650	2550X1620X1880

Water cooling series parameters

MODEL	MOTOR POWER	MAX PRESSURE	AIR FLOW	NOISE	WEIGHT	DIMENSION
Water Cooling Series	kW	bar	m3/min	db	kg	L x W x H
WD45-8	45.0	8	7.3	73	1100	1760X1160X1490
WD55-8	55.0	8	10	74	1250	1900X1250X1360
WD55-10	55	10	9	74	1250	1900X1250X1360
WD75-8	75	8	13	75	1650	1900X1250X1360
WD75-10	75	10	10	75	1650	1900X1250X1360
WD90-8	90	8	15	76	2050	1990X1250X1360
WD90-10	90	10	12.8	76	2050	1990X1250X1360
WD110-8	110	8	20	78	2550	2200X1600X1738
WD110-10	110	10	17.8	78	2550	2200X1600X1738
WD132-8	132	8	23	80	2700	2200X1600X1738
WD132-10	132	10	19	80	2700	2200X1600X1738
WD160-8	160	8	26	82	2900	2200X1600X1738
WD185-8	185	8	30	83	3300	2860X1800X1945
WD200-8	200	8	33	83	3500	2860X1800X1945
WD220-8	220	8	36	85	4500	2860X2000X2300
WD250-8	250	8	40	85	4700	2860X2000X2300
WD315-8	315	8	50	90	5000	2860X2000X2300



# System flow chart of water lubricated air compressor



# Complete system flow of water lubricated air compressor

